

# INCLISAFE IS1

SPECIFIC FOR TRACTORS



CONFIGURATION MANUAL

INCLISOFT Software for Windows



## How to install the software

Inside the INCLISAFE packaging box you will find the Configuration Software CD's. This software is called INCLISOFT. Each CD corresponds to a different version of Windows, depending on if it is the 32bits version or the 64bits version. Choose the proper CD that matches the Windows version installed on your PC.

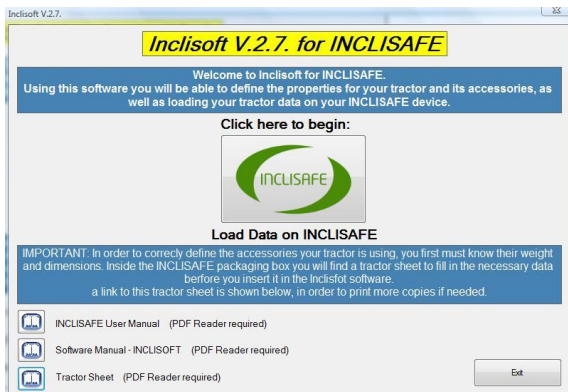
In order to correctly install the INCLISOFT software you just have to follow the steps shown on the screen after you insert the CD in your PC or laptop.

Note: In order to figure out which Windows version you have, just right-click on "My PC", and then click on "Properties". If your Windows version is 64bits you will find the text "*System type: 64bits Operative System*". If not, your system version is 32bits.

## INCLISOFT for tractors

Once installed the INCLISOFT software, run it. The INCLISAFE configuration process is quite simple: First, create a tractor profile with your tractor weight and properties, then configure the tractor profile with all the accessories and implements you will use, and finally load and the data on your INCLISAFE device with a simple click.

### Initial Screen



The initial screen shows you some advice and considerations regarding the INCLISAFE configuration before beginning the data load process. Read them carefully. Moreover, you have access to the User Manual and Configuration Manual pdf files.

You will only find the "Load data on INCLISAFE" button on this screen. Click on it to begin with the data load process.

## Tractor Profile Selection Screen

Select Tractor to Load Data on INCLISAFE

Select a tractor from the list below, in order to load its properties on the INCLISAFE. Add your tractor to the list clicking on "Add Tractor"

Tractors List

My New Tractor

Add Tractor

Export Data

Import Data

Properties of the selected Tractor

Brand: **John Deere** Model: **6100D**

Edit Tractor Properties Edit Tractor Configurations

See Tractor Properties (advanced)

Implements Configurations for the selected Tractor

Configuration 1:  
Front counterweight - Plough - Liftmounted Sprayer/Mistblower

Configuration 2:  
Tractor with no counterweights or additional implements

Configuration 3:  
Tractor with no counterweights or additional implements

Configuration 4:  
Tractor with no counterweights or additional implements

Configuration 5:  
Tractor with no counterweights or additional implements

Back Load Data

In this screen you will be able to see all the tractor profiles you have created and configured. You can add new tractor profiles (in case you use the INCLISAFE device in several tractors) and edit the accessories and implements configurations whenever you want.

Click on "Add Tractor" to create a new tractor profile.

Click on "Edit Tractor Configurations" to access the Configurations Edition Screen and modify your implements configurations.

Select a tractor profile from the list and click on "Load Data" in order to access the data load screen and load on the INCLISAFE device all the data and implements configurations of the selected profile.

## New Tractor Profile Screen

New Tractor Data

Tractor Data

Ref.: 14      NAME: My New Tractor

Tractor Type: Wheeled Tractor

Brand: John Deere

Model: 6100D

**Total Weight:** 2615 kg (No Counterweights)

Front Axle Weight: 1901 kg - if known

**Wheelbase:** 235 cm

**Rear Track Width:** 151.6 cm    **VERIFY**

**Front Track Width:** 151.2 cm    **VERIFY**

**Distance to Hitch:** 112.1 cm

If you know your tractor Center of Gravity position, please click [here](#)

**Search for your Tractor in the DataBase**

**IMPORTANT:** Track widths shown above are measured with standard wheel size, and they are the narrowest manufacturer allows. Please **VERIFY** these measures and modify them if necessary in the next screen. Working track width is usually wider than the one provided by the manufacturer, and this will influence on the INCLISAFE behavior.

Note: **bold** parameters are obligatory

[How to measure Track Width on a wheeled tractor](#)

Cancel      Next

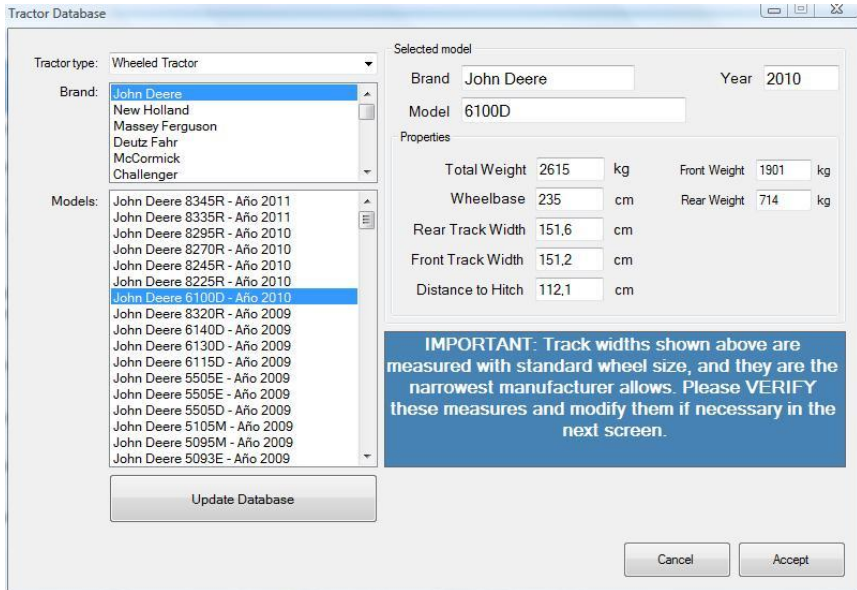
In this screen you will be able to insert all of your tractor properties, such as weight (no counterweights), wheelbase, track width, etc.

Click on “*Search for your tractor in the DataBase*” to explore our tractors database and look for your tractor brand and model. You will find its standard weight and properties. In case you don’t find your tractor in our database, just fill in all the necessary data. You will find it in your tractor’s technical sheet.

**IMPORTANT:** Database provided track width is the narrowest the tractor allows. On the other hand, tractors usually work with a wider track width in order to gain stability. If you are not sure about the provided track width, please verify it by measuring the track width on your tractor and modify the proper data in your tractor profile. You can also modify it after creating the tractor profile, by clicking on “*Edit Tractor Properties*” in the *Tractor Profile Selection* screen.

Please note that the picture on the right of the screen changes as the mouse pointer moves above the properties textboxes. This will facilitate comprehension of the several tractor properties and dimensions.

**Tractors Database Screen**



In order to search for your tractor in the database, select the tractor type (wheeled tractor or crawled tractor), as well as the tractor brand. Then look for your tractor model in the shown list. Choose the closest tractor model to your tractor, based on the manufacturing year (many models have different versions depending on the year, and their properties are slightly different).

**IMPORTANT:** Database provided track width is the narrowest the tractor allows. On the other hand, tractors usually work with a wider track width in order to gain stability. If you are not sure about the provided track width, please verify it by measuring the track width on your tractor and modify the proper data in the next screen. You can also modify it after creating the tractor profile, by clicking on “*Edit Tractor Properties*” in the *Tractor Profile Selection* screen.

In case of receiving a tractors database update (in .CSV format), click on “*Update Database*” and follow the instructions on screen.

## Edit Tractor Configurations Screen

Edit the Tractor Hanging Implements Configurations

Selected Tractor Data  
 My New Tractor Brand: **John Deere** Model: **6100D**

Now you can define up to 5 different load distributions, in order to represent a wide variety of working modes depending on the tractor accessories and hanging implements. For each configuration, select the accessories and hanging implements used and define their characteristics.

CONFIGURATION 1 2 3 4 5

Edit Working Configurations  
 Configuration 1 | Configuration 2 | Configuration 3 | Configuration 4 | Configuration 5

Front Counterweight

Rear Wheels Counterweight - Including Water

3-Point Hitch Implement

Liftmounted Tank and Sprayer/Mistblower

Front Tank

Front Loader/Vibrating Shaker

Back Finish

**Front Counterweight**

Weight [kg] 0500 Height from Ground [cm] 050 Length [cm] 030  
 Horizontal Distance from Front Axle [cm] 050 Height [cm] 050

**Liftmounted Tank and Sprayer/Mistblower**

Tank Capacity [litres] 1500 Type Sprayer  
 Tank Level Full (100%) Booms Position Folded  
 Distance from Tank Center to Rear Axle [cm] 160 Equipment Weight [kg] 0800  
 Tank Height [cm] 150 Equipment Length [cm] 170  
 Tank Height from Ground [cm] 100 Equipment Height [cm] 270  
 Booms/Mistblower Height from Ground [cm] 100

In this screen you can configure your tractor profile according to the accessories, counterweights and implements that your tractor will use when working with it. You can set up to 5 different tractor configurations based on the different accessories and implements combinations that you use.

**IMPORTANT:** The proper INCLISAFE performance is determined by the correct tractor implements configuration. Please perform this step carefully.

Each of the 5 possible implements configurations corresponds to one position of the INCLISAFE selector (See Inclisafe User Manual). In this way, you can shift from one configuration to another when working with the tractor, without unplugging the device or stopping the tractor.


For each tractor configuration you can add several accessories and implements: Front counterweight, rear wheels counterweight, any implement on the rear 3-point hitch, liftmounted sprayer or mistblower, front tank and front loader/vibrating shaker.

Click on the accessory or implement you want to add and a list of its dimensions and weights will be shown. These properties are needed to correctly configure the INCLISAFE device. You will see the default values we already chose for you, based on standard implement measurements. Please verify and modify them if needed in order to adapt them to your own accessories/implements.

**IMPORTANT:** The purpose of this accessories configurations definition is to determine the overall tractor and implements Center of Gravity as accurately as possible. The correct INCLISAFE performance depends on this. Therefore, insert the required implements dimensions and properties with as much accuracy as possible.

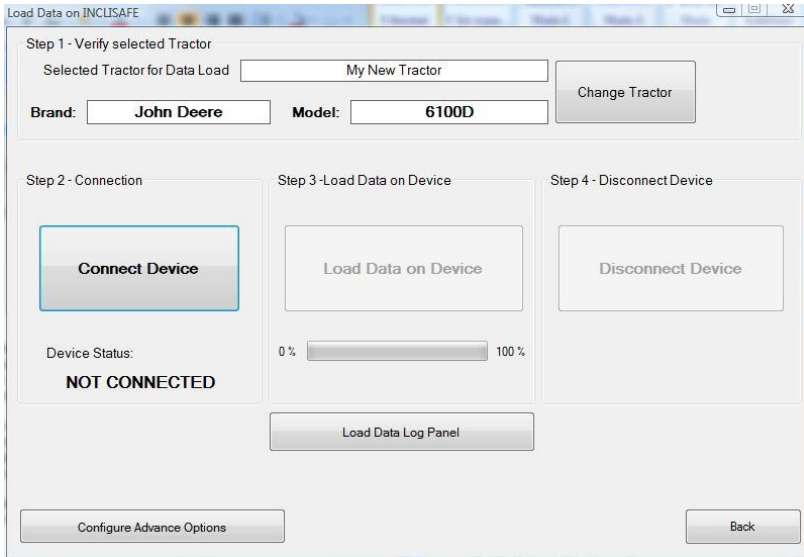
**IMPORTANT:** In case you work with sprayers or mistblowers, it is important to set the INCLISAFE device configurations corresponding to the different sprayer tank levels, since the overall Center of Gravity will change as the tank empties, and therefore the tractor behavior will change. As you see in the screen, it is possible to define the tank level. Therefore, we recommend setting each of the five configurations for each of the possible sprayer tank levels (full, 75%, 50%, 25%, empty). In this way, the tractor driver can shift the INCLISAFE selector as the sprayer tank empties. In this way, the INCLISAFE device will adapt to the new conditions and work properly.

### Configurations Card

CONFIGURACIONES DE TRABAJO PARA CADA POSICIÓN DEL SELECTOR	
CONFIGURACIÓN 1:	_____
	_____
CONFIGURACIÓN 2:	_____
	_____
CONFIGURACIÓN 3:	_____
	_____
CONFIGURACIÓN 4:	_____
	_____
CONFIGURACIÓN 5:	_____
	_____
	

Inside the INCLISAFE packaging box you will find a card in which you can write down the five different configurations you loaded in the INCLISAFE, as well as a plastic strip to link it to either the INCLISAFE device or any place inside the tractor cabin. In this way, you can see at each moment which configuration corresponds to each selector position.

## Load Data Screen



In this screen you can load your tractor profile and configurations in the INCLISAFE device. To do so, follow these steps:

- 1) Connect the INCLISAFE device to your PC using the USB wire provided. The device pilot light will turn orange.  
**IMPORTANT:** The INCLISAFE device must be horizontal for this operation. Please place the device on the table before plugging it to assure the horizontal condition.
- 2) Click on *Connect Device*. You will see a pop-up window on screen confirming the connection with the device. Click *Accept*.
- 3) Just click on **LOAD DATA ON DEVICE**. If all the data is correctly loaded, the device light pilot will blink from orange to yellow a few times. This indicates a correct data load.
- 4) Click on *Disconnect Device* and retire the USB connection.

At this point you have configured your INCLISAFE device in order to be used on your tractor. You can start using it.

Please read the INCLSAFE User Manual in order to receive the device installation and working instructions.